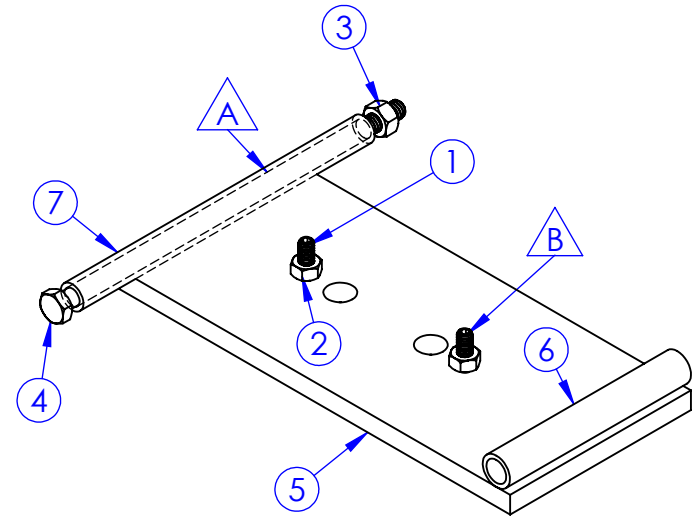
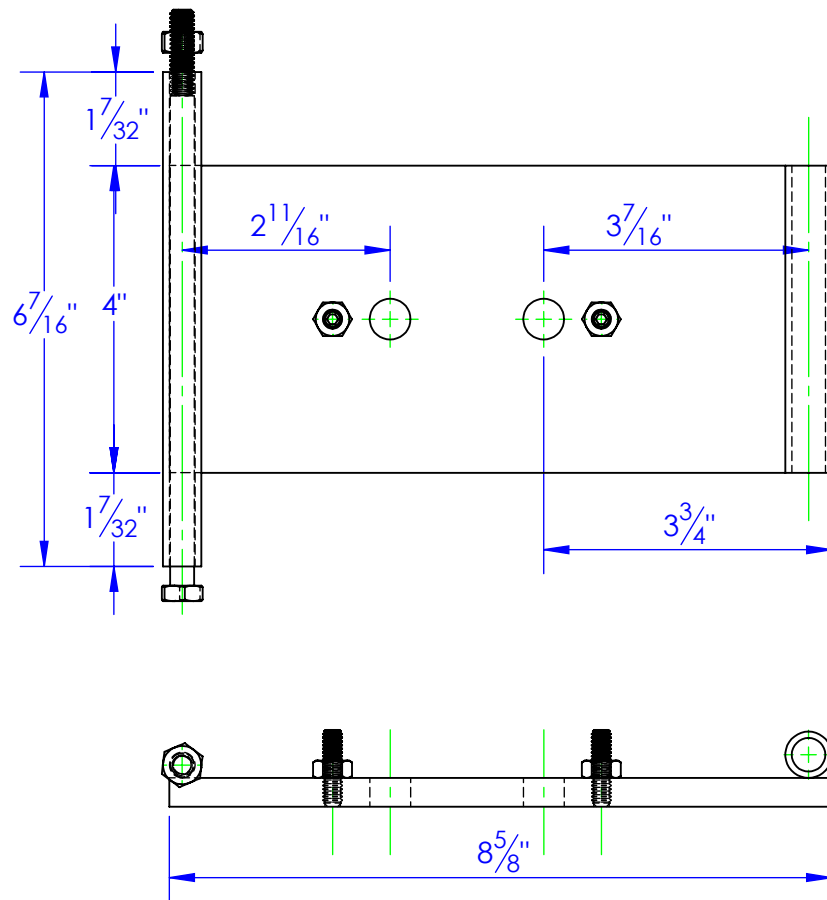
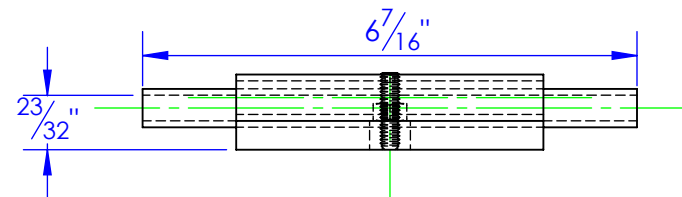


| ITEM NO. | PART NUMBER | DESCRIPTION | MATERIAL | DRAWING # | QTY. |
|----------|--------------------------|-------------------------------|-----------------|-----------|------|
| 1 | BO-1/4x1 SS | 1/4"x 1 SET SCREW | | STOCK | 2 |
| 2 | BO-1/4 HN | HEX NUT 1/4" | | STOCK | 2 |
| 3 | BO-5/16 HNN | NYLOK NUT 5/16" | | STOCK | 1 |
| 4 | BO-5/16x7-1/2 HCS | BOLT 5/16x7-1/2 HEX CAP SCREW | | STOCK | 1 |
| 5 | FP-HFL-523 | FLIPPER / SLIDE PLATE | 3/8" HRS. | 40-2601 | 1 |
| 6 | ST-MT .4375x 14ga L 4 | LENGTH: 4 | DOM 7/16x083 | STOCK | 1 |
| 7 | ST-MT .5 x .083 L 6.4375 | LENGTH: 6-7/16" | CDBW .50 x .083 | STOCK | 1 |

| REVISIONS | | | |
|-----------|---|-----------|----------|
| REV. | DESCRIPTION | DATE | APPROVED |
| A | UPDATED TO NEW STANDARD DWG # FROM HFL-524 | 2/20/2012 | |
| B | ADDED SET SCREWS, NUTS, & BOLT | 1/24/2013 | |



REPLACEMENT PART # RE-HFL-524



PROPRIETARY AND CONFIDENTIAL
THE INFORMATION CONTAINED IN THIS
DRAWING IS THE SOLE PROPERTY OF TRIPLE
C INC. ANY REPRODUCTION IN PART OR
AS A WHOLE WITHOUT THE WRITTEN
PERMISSION OF TRIPLE C INC. IS PROHIBITED.

| | |
|---|----|
| DIMENSIONS ARE IN INCHES TOLERANCES: FRACTIONAL $\pm 1/16$ ANGULAR: MACH ± 1 BEND \pm TWO PLACE DECIMAL ± 0.10 THREE PLACE DECIMAL ± 0.005 | |
| MATERIAL | -- |
| DO NOT SCALE DRAWING | |

| | |
|--|------------|
| NAME | DATE |
| DRAWN: HEATH | 1/24/2013 |
| PART # | |
| ASM # | FP-HFL-524 |
| COMMENTS: FLIPPER/ SLIDE TOP PLATE ASSEMBLY | |

| | |
|------------------------------------|-----------------------|
| P.O. BOX 248, SABETHA, KS 66534 | |
| TRIPLE C INC. | |
| SIZE A | DWG. NO. 40-1601 B |
| SCALE: 1:2.5 | WEIGHT: 4.14 |
| SHEET 1 OF 1 | |